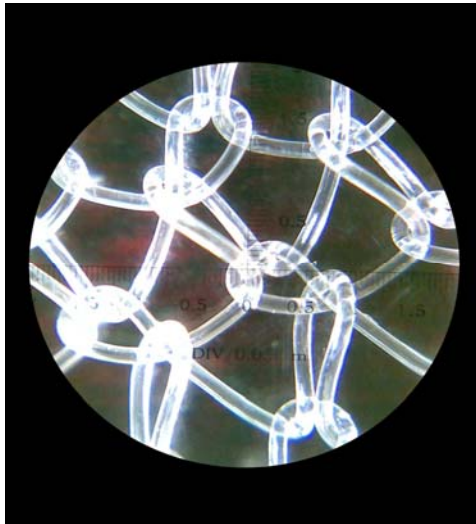


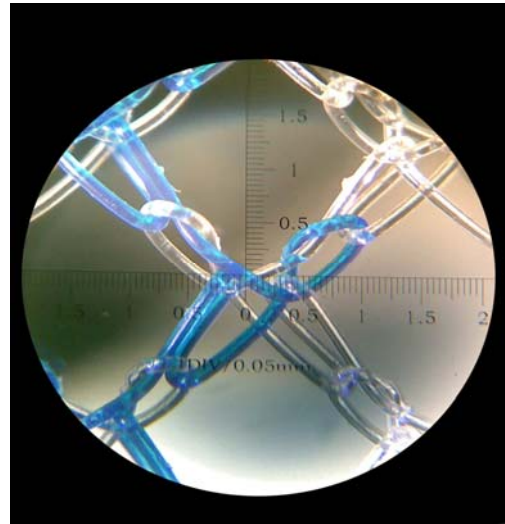


TransEasy Medical Tech.

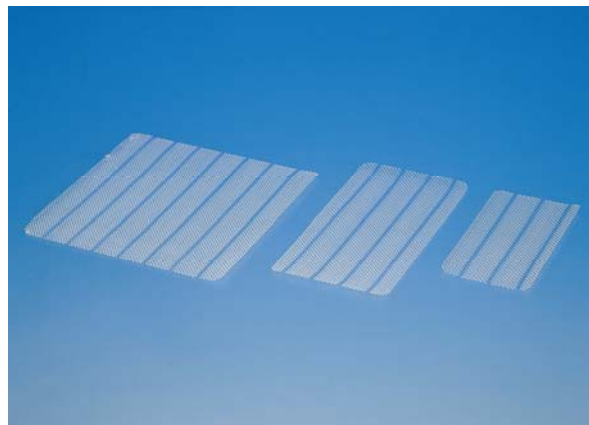
305 GongMei Bldg., No.2 JiuXianQiao Rd.
 Chaoyang District, Beijing, China 100015
 Phone: +86 10 51265628
 Fax : +86 10 51265629
 E-Mail : gw@temedical.com



PMM knit unit



LMA knit unit



LMA mesh

Table 1. Parameter differences between normal mesh and LMA

	<i>Normal mesh</i>	<i>LMA</i>
Material	Polypropylene monofilament	Polypropylene monofilament
Fabric weight (g/m ²)	over than 80	40
Thickness (mm)	0.60	0.50
Submissiveness	Good	Good
Bursting Strength (N)	400	330
Biocompatibility	Good	Good